

## The Chase

Harlow, CM17 9JA

Offered for sale with no onward chain is this impressive three bedroom split level apartment benefits include an open plan living/kitchen/dining area, two ensuites, two sun rooms, two balconies and two parking spaces.

Agent Note: In accordance with Section 21 of The Estate Agents Act 1979 (Declaration of Interest), please note that the owner of this property has an association with Noble Residential Limited

**£350,000**

# The Chase

Harlow, CM17 9JA



## Entrance Hall

Entrance door, wooden flooring, intercom, spiral staircase to upper floor.

## Open Plan Living/Kitchen/Dining Area

20'2 x 19'6 narrowing 11'5 (6.15m x 5.94m narrowing 3.48m)

Wooden flooring, two double glazed windows to front, radiator, integrated dish washer, washer dryer, fridge freezer, oven, gas hob, extractor, stainless steel single drainer sink, wall and base units, boiler, sliding door to sun lounge.

## Sun Lounge

7'7 x 5'9 (2.31m x 1.75m)

## Balcony

9'3 x 5'9 (2.82m x 1.75m)

Accessed from Sun Lounge and Balcony.

## Bedroom One

11'6 x 8'9 (3.51m x 2.67m )

Double glazed window to rear, sliding door to Sun Lounge, carpet, radiator, fitted wardrobes, vaulted ceiling.

## En Suite

Shower cubicle, low level WC, pedestal wash hand basin, heated towel rail, tiled flooring, extractor, electric shaving point.

## Sun Room

8'6 x 7'5 (2.59m x 2.26m)

## Balcony

7'5 x 3'11 (2.26m x 1.19m)

## Bedroom Two

10'2 x 9'3 (3.10m x 2.82m)

Double glazed door opening onto balcony, wooden flooring, radiator.

## En Suite

## Bathroom

Frosted double glazed window to front, panelled bath, pedestal wash hand basin, low level WC, vinyl flooring, part tiled walls, radiator.

## Landing

Spiral staircase to lower floor.

## Bedroom Three

11'6 x 10'1 at max (3.51m x 3.07m at max)

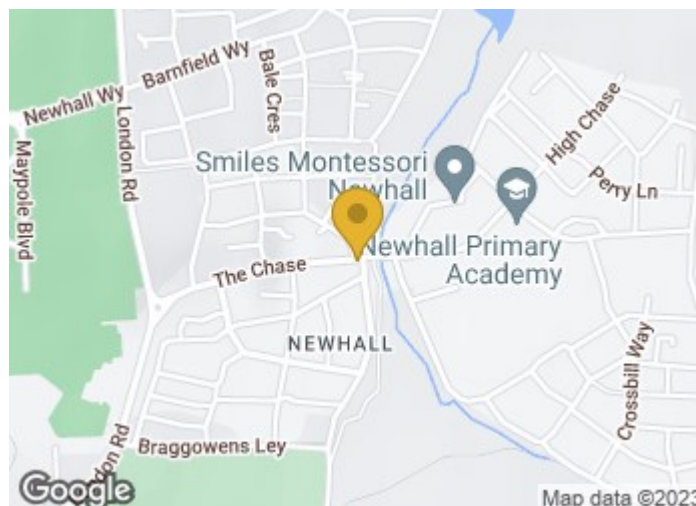
Double glazed window to rear, radiator, wooden flooring, fitted wardrobes.

## Ensuite

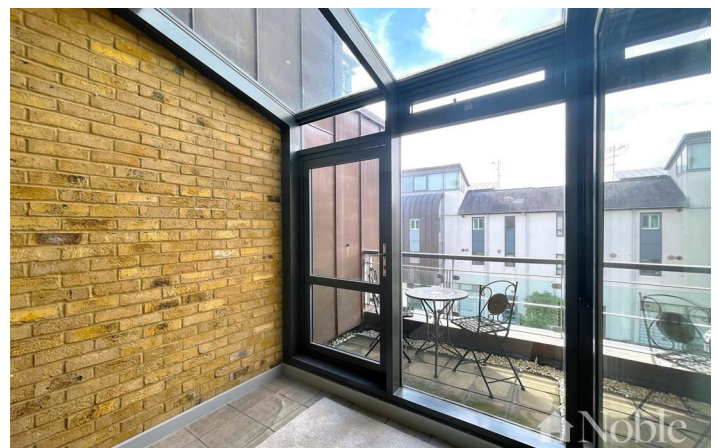
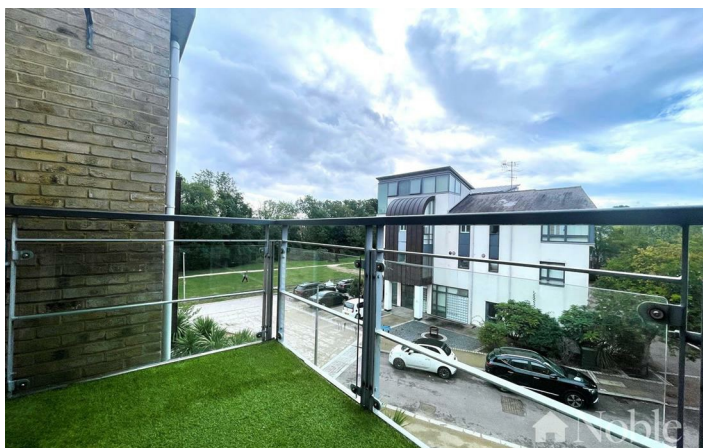
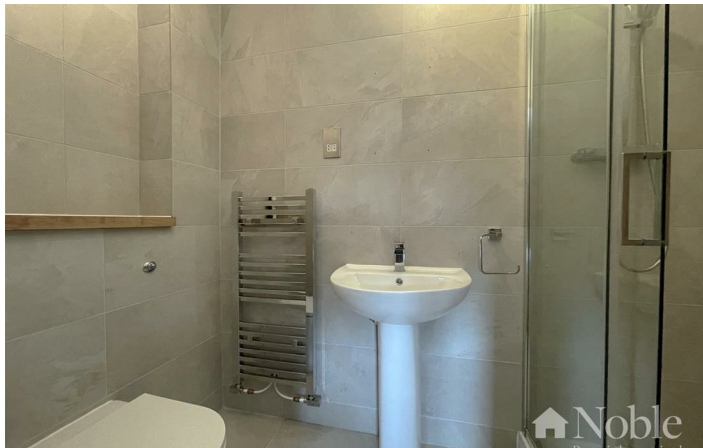
Frosted double glazed window to front, vinyl flooring, low level WC, pedestal wash hand basin, shower cubicle, part tiled walls.

## Parking

Two allocated parking spaces.

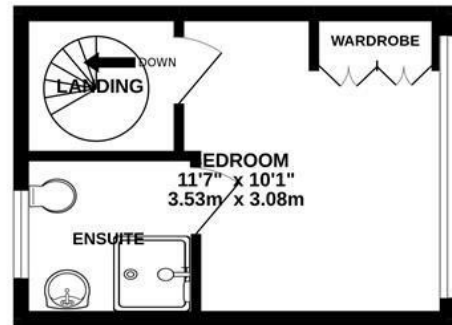
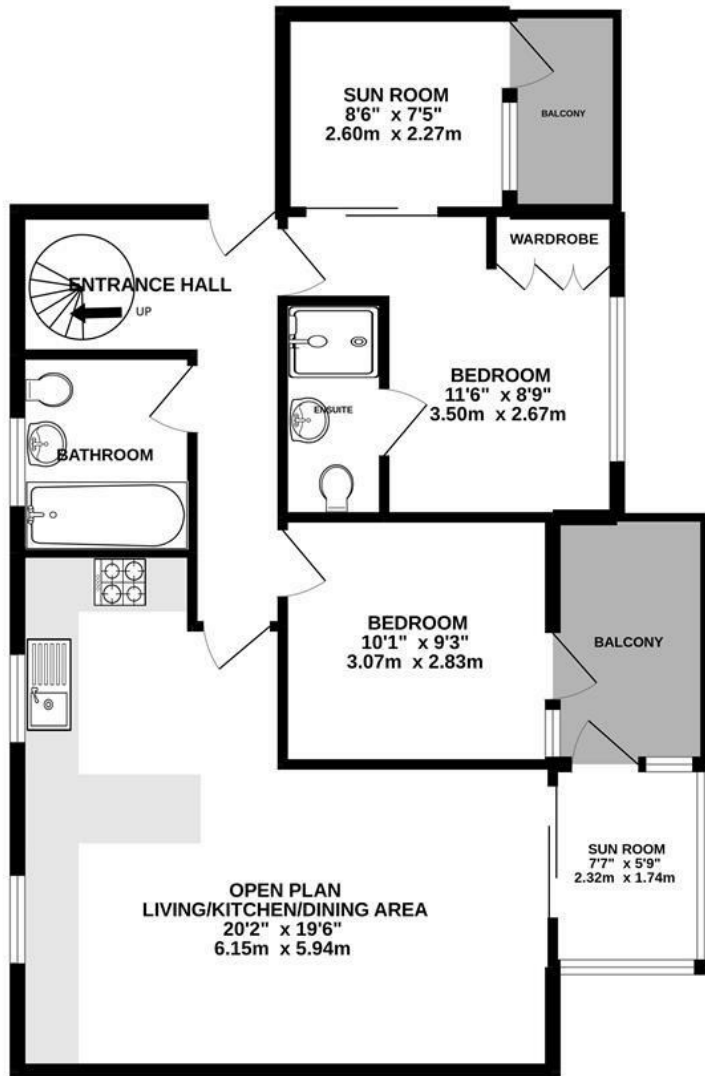






785 sq.ft. (72.9 sq.m.) approx.

184 sq.ft. (17.1 sq.m.) approx.



TOTAL FLOOR AREA : 969 sq.ft. (90.0 sq.m.) approx.

Whilst every attempt has been made to ensure the accuracy of the floorplan contained here, measurements of doors, windows, rooms and any other items are approximate and no responsibility is taken for any error, omission or mis-statement. This plan is for illustrative purposes only and should be used as such by any prospective purchaser. The services, systems and appliances shown have not been tested and no guarantee as to their operability or efficiency can be given.  
Made with Metropix ©2022

These particulars, whilst believed to be accurate are set out as a general outline only for guidance and do not constitute any part of an offer or contract. Intending purchasers should not rely on them as statements of representation of fact, but must satisfy themselves by inspection or otherwise as to their accuracy. No person in this firm's employment has the authority to make or give any representation or warranty in respect of the property.

